

JACKSONVILLE MEETINGS FACILITY GUIDE




meetinjax.com

.....

SO MUCH TO OFFER, ALL IN ONE PLACE.

.....



Located on the banks of the St. Johns River, Jacksonville is a vibrant city with the first class amenities and accommodations to make your next convention a success. We're always looking to create the perfect environment for your meeting, which is why we recently added wireless capabilities to our convention facilities such as The Prime F. Osborn III Convention Center and the Times-Union Center for the Performing Arts. With the mild year-round climate and proximity to the Atlantic Ocean, Jacksonville is a wonderful place to enjoy outdoor activities such as golf, tennis, boating, deep-sea fishing or just sunning on one of our sandy beaches. There's also unique shopping, gourmet restaurants, performing arts and museums to round out the activities that are sure to please everyone and make their visit memorable.

To plan a meeting, convention, trade show, sports tournament or group tour, contact Visit Jacksonville.

Why use Visit Jacksonville? For a variety of reasons, among them — our services are FREE! We forward your requests and proposals to the right people. Then, we compile responses and return them to you in one convenient package. No more wasted time and effort.

Neutral Party

We offer objective, unbiased, factual information about all local group, meeting and convention facilities so that you can make an educated decision. Our only obligation is to find the facility that best suits your needs.

Regional Expert

No one knows the region better than we do. Therefore, we have the resources available to share hotel information, meeting facility specifications and supplier references as well as suggestions for specific activities.

- More than 100 non-stop daily flights
- The largest facility offers over 275,000 square feet of convention center space
- Over 16,000 hotel rooms
- Unique venues and event spaces for groups from 10 to 10,000
- Easy access by highways, water-taxi, skyway rail, buses and trolleys

Destination Management Services

In addition to providing information to assist you in site selection, our Services Department offers a housing bureau and puts you in touch with firms specializing in transportation, entertainment, dining, registration and other group and convention-related needs.

Meeting and Planning Services

We check hotel availability for your preferred dates, distribute meeting specifications to area hotels, collect proposals on your behalf, conduct personalized site inspections, provide promotional materials to encourage attendance and much, much more.

Meetings-Specific Web Site

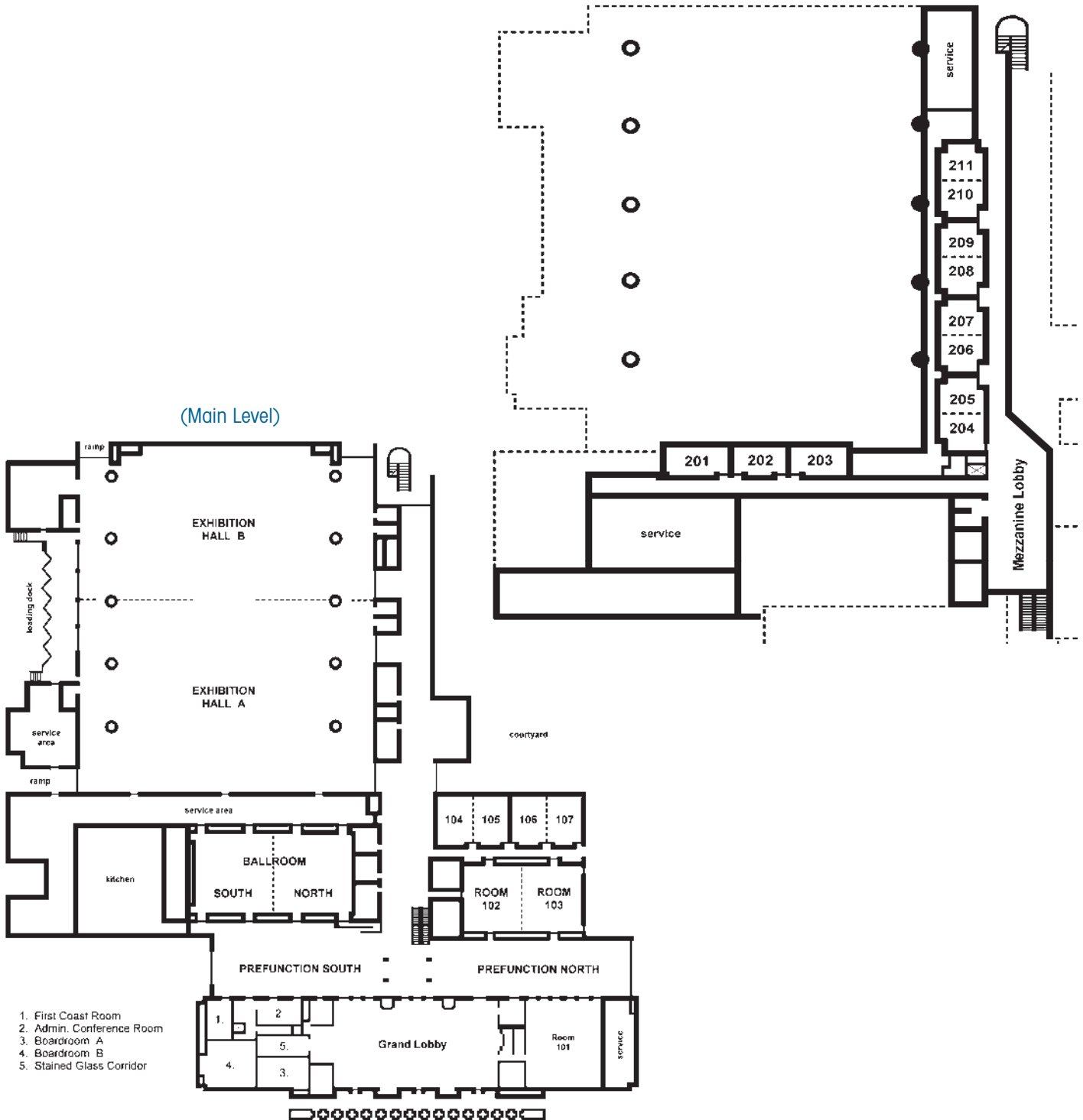
Visit Jacksonville's meeting planner's site is designed specifically with the planner's needs in mind. We also offer microsites where we will develop a Web site specifically for your group showcasing the group hotel(s), meeting details, area events, maps and much more! All free of charge!

Learn more at meetinjax.com

PRIME F. OSBORN III CONVENTION CENTER

(Mezzanine Level)

(Main Level)



- 1. First Coast Room
- 2. Admin. Conference Room
- 3. Boardroom A
- 4. Boardroom B
- 5. Stained Glass Corridor



PRIME F. OSBORN III CONVENTION CENTER

(Capacity Stats)

Room Name	Dimensions L x W, Ft	Area, Sq Ft	Ceiling Ht, Ft	Thtr	Conf	Clstrm 3pp/8'	Rcpn	Banq Rds/10	Holl Sq	10x10 Booth
Exhibit Hall A	238x180	42,840	32.5	3500		1500	2800	2100		191
Exhibit Hall B	238x150	35,700	32.5	2700		1200	2600	1800		174
Combined Exh Hall	238x330	78,540	32.5	6300		2600	6000	3900		374
Ballroom North	65x78	5,070	22.5	530		162	360	250	75	
Ballroom South	65x78	5,070	22.5	530		162	360	250	75	
Combined Ballroom	130x78	10,140	22.5	1000		360	800	500		40
Room 101	63x73	4,547	30	392		180	350	200	75	20
Room 102	49x61	2,989	20	280		98	230	160	65	
Room 103	49x61	2,989	20	280		98	230	160	65	
Rooms 102-03	98x60	5,978	20	750		216	490	280		28
Room 104	39x28	1,137	12.5	95	12	40	70	60	30	
Room 105	39x30	1,230	12.5	100	12	40	70	60	30	
Rooms 104-05	58x39	2,367	12.5	192		90	150	120	48	8
Room 106	39x30	1,240	12.5	100	12	40	70	60	30	
Room 107	39x30	1,158	12.5	95	12	40	70	60	30	
Rooms 106-07	60x39	2,398	12.5	192		90	150	120	48	8
Grand Lobby	132x72	10,008	75	950		360	900	550		45
Board Room A	42x29	1,218	12	–	20	–	–	–	20	–
Board Room B	43x41	1,850	30	190	30	72	140	90	36	
Stained Glass Prlr.	39x18	694	22 pk		12			30	24	
First Coast Room	39x20	780	11		12	24				
Conference Room	30x18	540	11		16					
Prefunction North	161x50	8,050	19 pk				450	330		27
Prefunction South	139x50	6,950	19 pk				400	420		30
Mezzanine	100x40	3,650	24+				250	150		
Room 201	39x23	884	11	90		34		50	20	
Room 202	34x23	767	11	80		30		50	18	
Room 203	39x23	850	11	100	12	40	30	50	20	
Room 204	29x32	895	11	90	12	30	40	40	21	
Room 205	29x32	895	11	100	12	30	40	40	21	
Rooms 204-05	58x32	1,790	11	190		66	90	80	42	
Room 206	29x32	895	11	100	12	30	40	40	21	
Room 207	29x32	895	11	90	12	30	40	40	21	
Rooms 206-07	58x32	1,790	11	190		66	90	80	42	
Room 208	26x32	825	11	100	12	30	40	40	20	
Room 209	26x32	825	11	90	12	30	40	40	20	
Rooms 208-09	52x32	1,650	11	190		66	90	80	40	
Room 210	29x32	895	11	100	12	30	40	40	21	
Room 211	29x32	895	11	100	12	30	40	40	21	
Rooms 210-11	58x32	1,790	11	200		66	90	80	42	
Pavilion Mall (Grass)	225x146	32,850	Open							
Flagler Terrace Mall	110x100	11,000	Open				500	550		
Totals	Inside: Outside: Mtg Space:	156,184 42,500 48,750		Note: All maximums shown leave very limited space for presenter equipment. Staging and A/V requirements may reduce seating capacity.						

PRIME F. OSBORN III CONVENTION CENTER AND ITS OFFERINGS

GENERAL BUILDING INFORMATION:

- 275,000 Gross s.f. of space
- 48,000 s.f. carpeted meeting space in 22 rooms
- 78,500 s.f. contiguous exhibit space, 100,000 total
- 450 10'x10' booths in contiguous space, 550 total
- 19,000 s.f. pre-function area plus 11,000 s.f. terrace
- 31,500 s.f. fenced grass pavilion
- 10,000 s.f. Grand Lobby with 75' vaulted ceiling
- 860 Parking spaces
- Two (2) Executive Boardrooms and VIP Suite
- Six (6) bay loading docks and two (2) on-grade hall entrances
- Wireless Capabilities

LOADING DOORS:

Exhibit Hall Door 1: Grade-entry rollup (Hall A), 15'H x 24'9"W
Doors 2, 3, 4, 5: Loading Dock, rollups, 14'H x 20'W
Door 6: Grade-entry rollup (Hall B), 15'H x 24'9"W
Door 11, Ballroom: 7'10"H x 7'7"W
Prefunction South Wing Doors: 10'9"H x 9'2"W
Grand Lobby, Interior Rollup Door: 11'4"H x 9'6"W
Room 101, Interior Rollup Door: 11'4"H x 6'3"W
Room 102, Interior Wing Doors: 7'11"H x 7'11"W
Room 104, Interior Pocket Door: 8'4"H x 8'4"W

FLOOR LOADING:

Exhibit Hall: 360 lbs/psf
Meeting Rooms: 360 lbs/psf
Old Terminal: 250 lbs/psf

LIGHTING:

Exhibit Hall, Primary: Metal halide, zoned
Secondary: Quartz halogen, dimmable

Ballroom, Primary: Metal halide, zoned.
Secondary: Incandescent Chandeliers, Lutron Control

Room 101, Primary: Metal halide, zoned.
Secondary: Incandescent Chandeliers, Sconces, dimmable

Rooms 102-103, Primary: Metal halide, zoned.
Secondary: Incandescent downlights

Grand Lobby, Primary: Incandescent ceiling floods, dimmable
Secondary: Incandescent wall sconces, dimmable

Meeting Rooms, Primary: Fluorescent, zoned
Secondary: Incandescent downlights, dimmable



UTILITIES:

Compressed Air: at selected locations in Exhibit Hall by prior request. Average 60 psi

Electrical: 120VAC, 208VAC in 30'x30' floor grid, perimeter boxes Up to 480VAC, 400A by request.

Plumbing: Domestic water and drain service at selected Exhibit Hall locations

Telecommunications: The Exhibit Hall and meeting rooms are wired for Cat 3 and Cat 5 HSD

Rigging: The Center's Exhibit Hall Rigging Grid is available on request. Rigging plots may be required.

Columns: The Exhibit Hall span between column centers is 180' north-south; and 60' east-west. The maximum column-free area is 330' x 180' (59,400 sq. ft.)

TRANSPORTATION, PARKING AND OTHER INFORMATION:

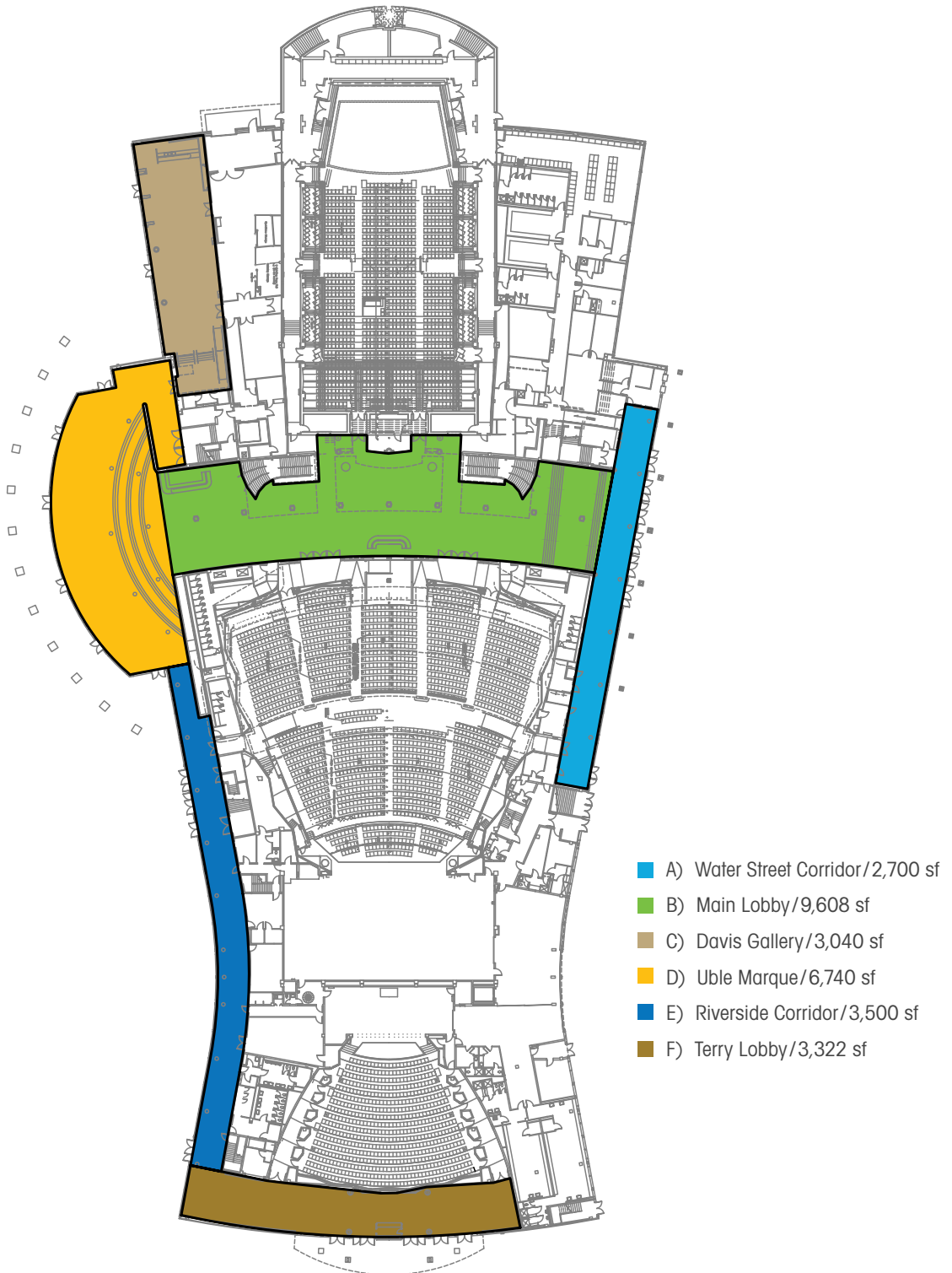
Located on 22 acres, the Prime F. Osborn III Convention Center has on-site parking for nearly 1,000 cars, with 4,000 additional spaces within easy walking distance. Public transportation is provided through our bus and trolley system. The Skyway can also whisk visitors from Jacksonville's main Downtown business centers and from across the St. Johns River. For your convenience, ATMs, telephones with volume enhancement and on premise security are all available to make your event enjoyable and safe.

.....

TIMES-UNION CENTER FOR THE PERFORMING ARTS

.....

(First Floor)



TIMES-UNION CENTER FOR THE PERFORMING ARTS

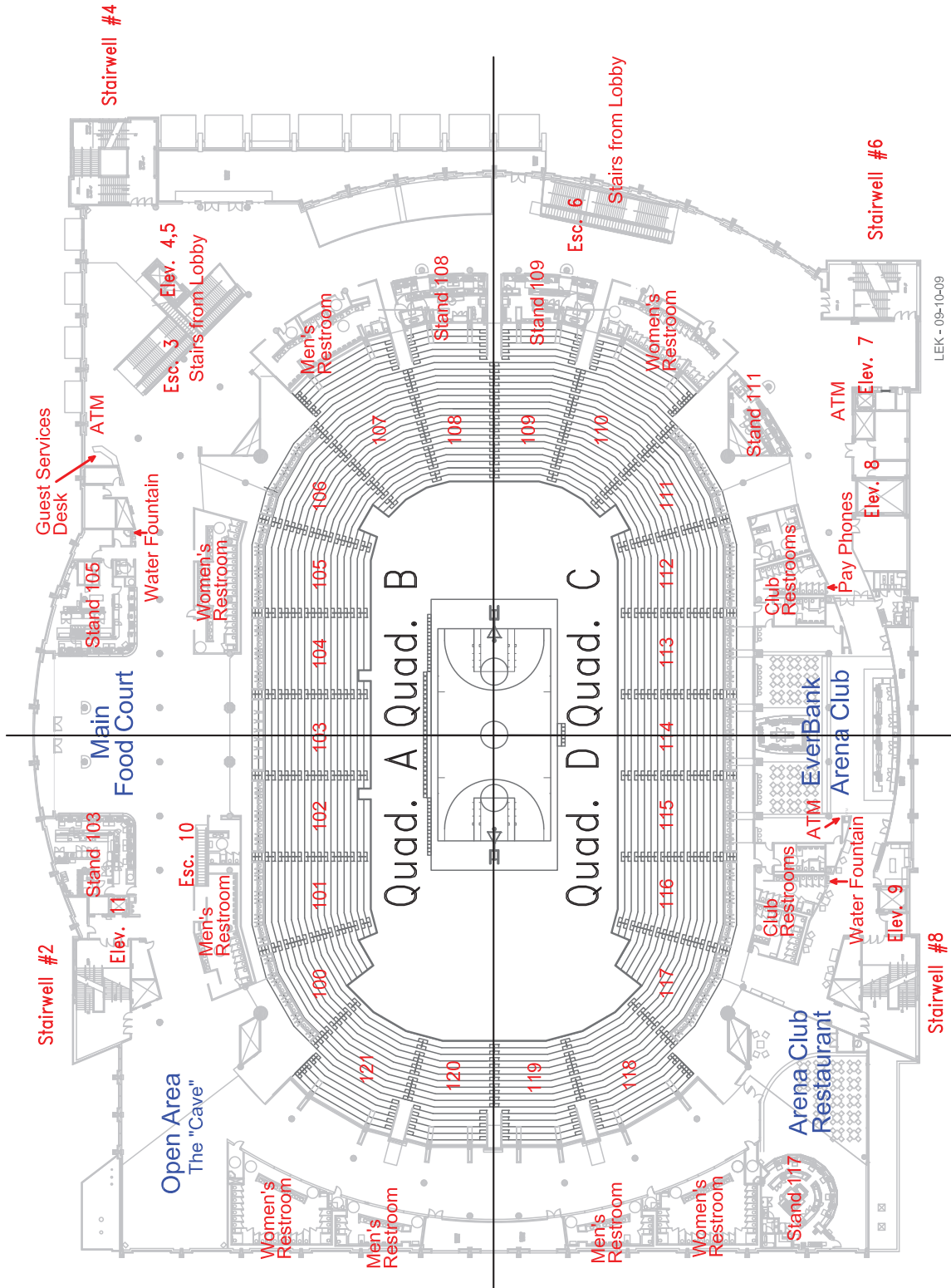
(Dimensions)

Room Name	Dimensions	Square Footage	Theater	Classroom	U-Shape	Reception	Banquet	Ceiling Height (Ft.)
Moran Theater	128 x 128	16,300	2,936	–	–	–	–	52
Jacoby Hall	82 x 110	9,000	1,874	–	–	–	–	50
Terry Theater	68 x 58	3,800	602	–	–	–	–	26
Shircliff Lounge	64 x 29	1,850	100	100	25	200	124	–
Davis Gallery	105 x 31	3,200	200	150	50	250	175	–
South Marque	133 x 30	3,900	–	–	–	350	280	50
Lower Lobby	184 x 48	8,800	–	–	–	550	–	–
Upper Lobby	244 x 48	11,000	–	–	–	500	300	–



VYSTAR VETERANS MEMORIAL ARENA

(Main Concourse)



LEK - 09-10-09

VYSTAR VETERANS MEMORIAL ARENA

Vystar Veterans Memorial Arena seats up to 15,000 people with over 27,000 square feet of unobstructed space. The arena broke attendance records in 2014, 2015, and 2017 with over 572,800 annual attendees.

The state-of-the-art venue features a 27,000 sq. ft. unobstructed main floor area (115' x 260'), large enough to accommodate 140 (10' x 10') booths, 36 executive suites, St. John suites, and a members-only arena club. The arena also boasts three concourse areas, with sweeping city views and excellent sports complex views, to accommodate additional exhibit booths, catering, banquets and break-out meeting space. You'll also find a sports sound system and LED lighting system, pipe and drape on premise, as well as most AV-required equipment on site.

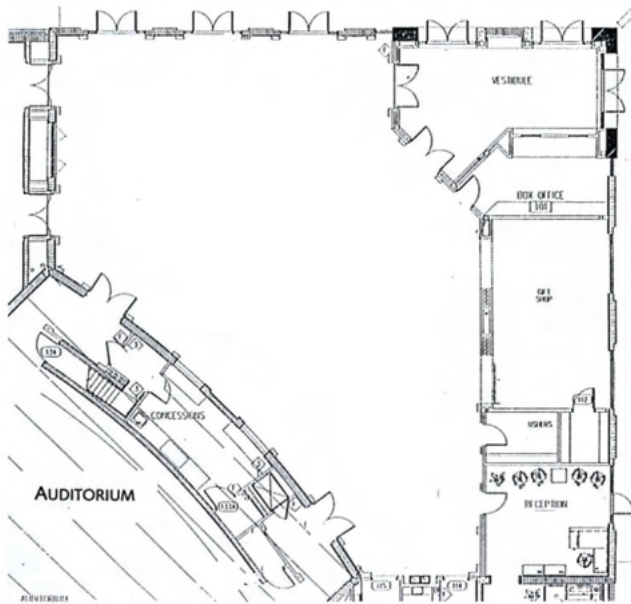
The Veterans Memorial Arena is located in the Jacksonville Sports Complex, adjacent to TIAA Bank Field, home of the NFL Jaguars, and the Baseball Grounds of Jacksonville, home of the AA Jumbo Shrimp baseball team.

The Veterans Memorial Arena is also a prime location for trade shows and exhibitions. It is easily accessible from two main expressways, has paved parking for up to 6,000 vehicles and two parking garages immediately adjacent to the venue.

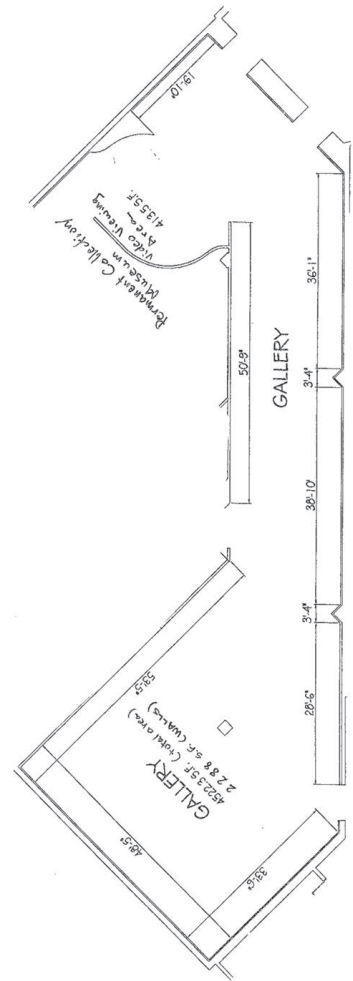


THE RITZ THEATRE AND MUSEUM

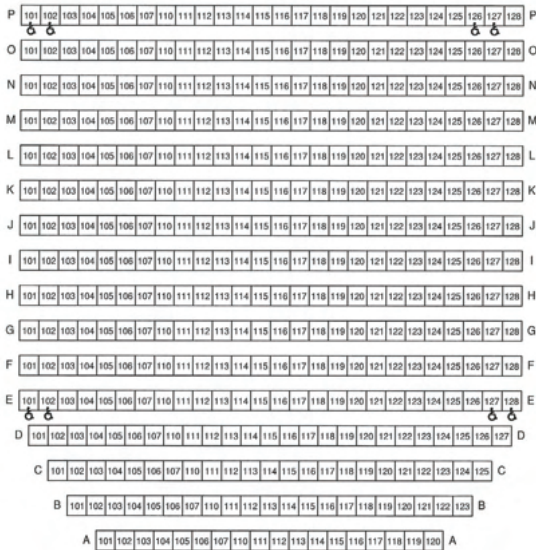
(Ritz Lobby)



(Ritz Museum)



(Ritz Theatre, Capacity – 402)



STAGE

THE RITZ THEATRE AND MUSEUM — A BLEND OF HISTORY AND CULTURE

In 1999, The Ritz Theatre and Museum was constructed on the site of the 1929 Ritz Theater movie house in Jacksonville’s historic African American community of La Villa. During La Villa’s height of activity in the 1920s-1960s, it was known as the “Harlem of the South.”

The mission of the Ritz Theatre and Museum is to “research, record, and preserve the material and artistic culture of African American life in Northeast Florida and the African Diaspora, and present it in an educational or entertaining format, showcasing the many facets that make up the historical and cultural legacy of this community.”

Building on the community’s proud heritage, the Ritz is truly a special place where history’s missing chapters are being restored, where talent is nurtured, and creativity is celebrated. It is a community gathering place where ideas are exchanged, information is disseminated, and a roadmap for the future is developed.

Whether visiting the museum, attending a concert, viewing a film or listening to a lecture, the Ritz has a unique energy that leaves you with a special feeling. There is always something going on, such as an exhibition, music or dance performance, or the dramatic arts inside the Ritz that will enthrall, educate and entertain.

If you’re looking for something to do in downtown Jacksonville, be sure to check out the calendar of events for upcoming holiday and seasonal performances, as well as community gatherings at the Ritz Theatre and Museum. The Museum is open Tuesday through Saturday, and offers both individual and group rates. The Ritz Theatre and Museum is also the perfect place for special occasions, such as birthdays, wedding anniversaries and more.



.....

TIAA BANK FIELD

.....

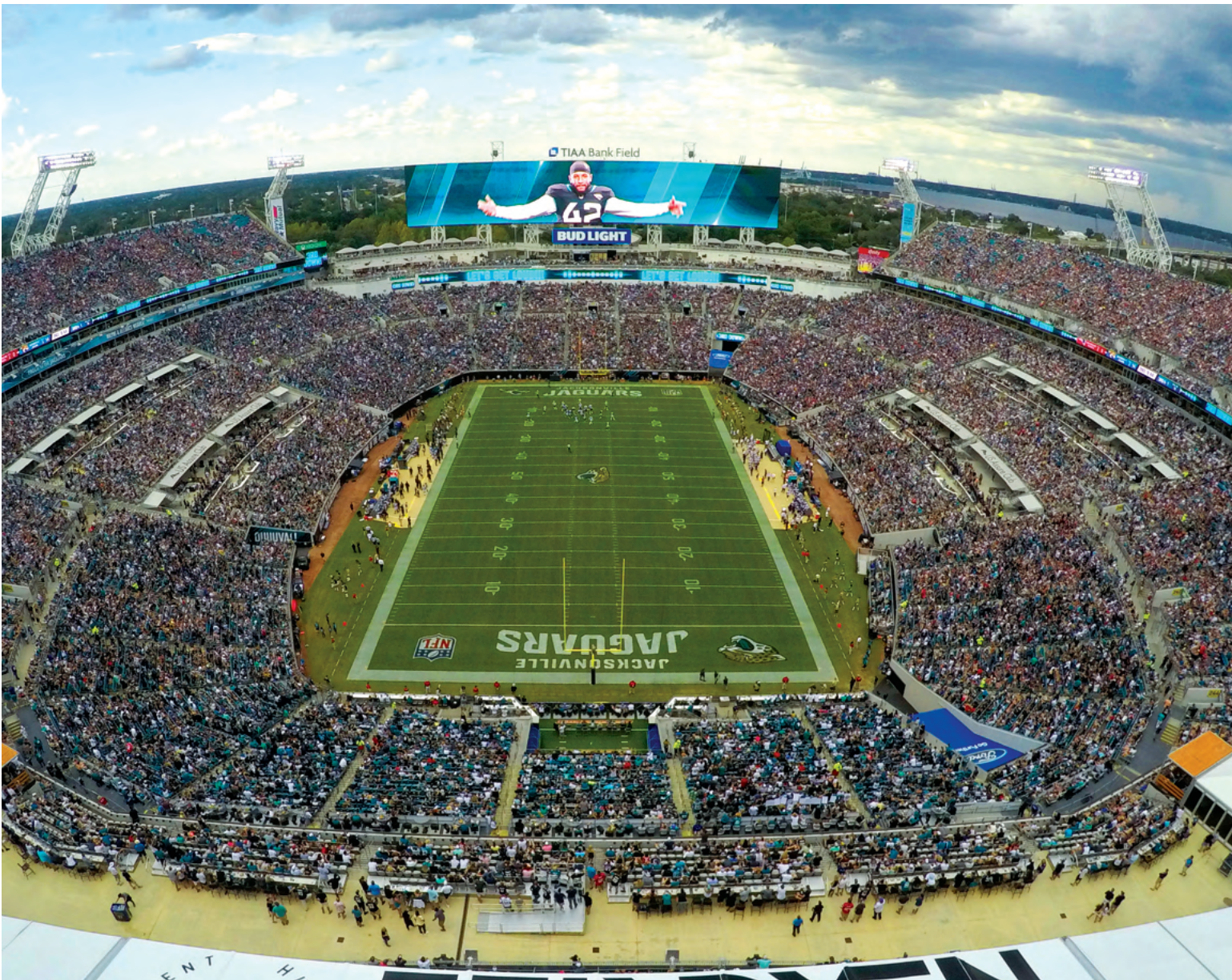
(Capacity Stats)

SPACE	SQUARE FEET	CAPACITY
TIAA Bank Field	99,682	
Daily's Place Amphitheater	90,000	5,550
Dream Finder's Homes Flex Field at Daily's Place	94,000	
East and West Clubs	62,896	3,500
Fields Auto Group Terrace Suite	21,000	1,400
Owner's Suite		75
North Spa and Cabana Deck	54,270	2,500
Sky Patio	23,085	1,000



TIAA BANK FIELD

The Jaguars' home stadium has undergone significant changes and upgrades in its 22-year history. But as many new buildings and designs have come on line around the NFL, Jacksonville is still able to boast one of the most fan-friendly and technologically-advanced stadiums in the league. TIAA Bank Field became the proud home of the world's largest in-stadium video boards in 2014. At 362 feet wide and 60 feet high, the two massive end zone displays are wider than the length of a football field and have set the standard for in-venue visual experience. Additional video boards and ribbon panels help enhance specialty event AV production. Whether you're looking to plan a corporate event, social affair, trade show or community festival, our creative and knowledgeable staff are prepared to assist from start to finish. Let us help you take your idea from vision to reality, using one of a diverse selection of available event spaces.





Visit
Jacksonville
and the Beaches

Whatever your needs are, let our meeting specialists assist you in creating the perfect trip for your group, all free of charge. To learn more, go to meetinjax.com or call **800-340-4444**.